



To Connect A Mac to Internet by Using FreePPP 2.6.2 (Mac OS 9.2)

It is required to install additional dialer program, FreePPP

FreePPP is nothing short of the most popular Macintosh utility for connecting to dialup Internet accounts.

It is freeware, so you can get FreePPP at any download site such as

<http://download.com.com/3000-2148-884452.htm>

|

1. Installation SU(WLL Phone)

?) For Terminal type (i.e. LST-250/2500)

- a. SU setting for HDR service Off-Hook -> dialing '##7#0*' -> On-Hook

In this case, you can't use other Data service(modem, PC fax, Analog fax).

- b. If you want to cancel HDR mode, dial '##7#2*'

?) For Phone type (i.e. LSP-340/3000)

- a. To confirm the baud rate of phone serial port, Press [MENU] + [2 : Additional] + [4 : SIO

Baud rate] .

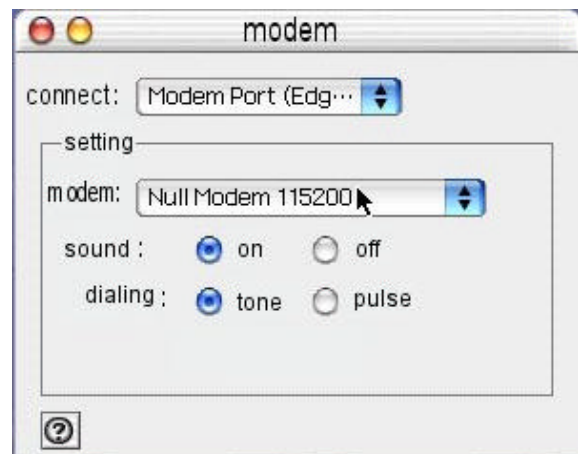
Then you should select 115,200 bps option.

2. Installation a modem

- a. Control Panel -> Modem

- b. Select the Modem port connected to WLL Phone

- c. Select "Null Modem 115200" at Modem

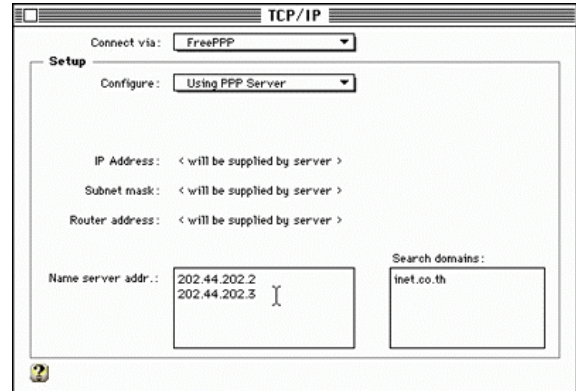




3. Installing FreePPP for Macintosh

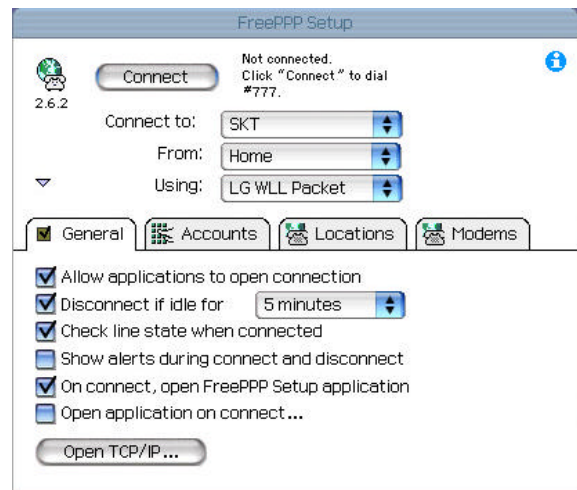
4. Configuring TCP/IP

- a. Click on Apple menu
- b. Select Control Panel
- c. Click on TCP/IP
- d. Select FreePPP at connect via
- e. Select Using PPP Server at Configure
- f. Enter Name server address
- g. Enter Search domains
- h. Click Save button



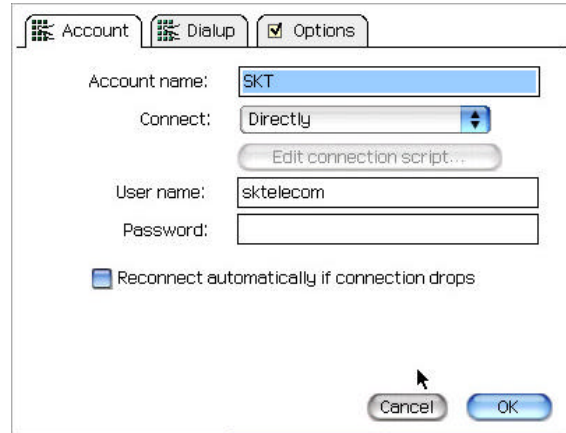
5. Configuration a connection environment for the internet service

- a. Open FreePPP Setup



b. Click on Account tab

- Click on New button
- Enter Account Name
- Connect : Directly
- Enter User name & Password



Account Dialup Options

Account name: SKT

Connect: Directly

Edit connection script...

User name: sktelecom

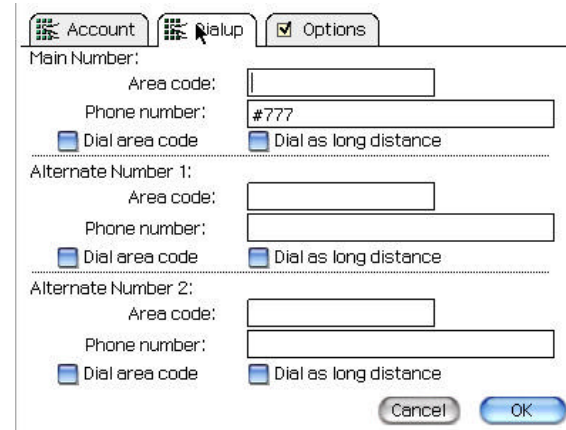
Password:

Reconnect automatically if connection drops

Cancel OK

c. Click Dialup tab

- Phone number : #777



Account Dialup Options

Main Number:

Area code:

Phone number: #777

Dial area code Dial as long distance

Alternate Number 1:

Area code:

Phone number:

Dial area code Dial as long distance

Alternate Number 2:

Area code:

Phone number:

Dial area code Dial as long distance

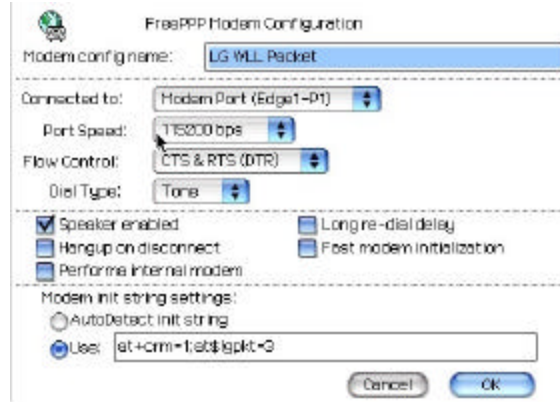
Cancel OK

d. Click Option tab

- Ip address : Select Assigned by PPP server
- Click on OK button

e. Click Modem tab

- Click on New button
- Enter a Modem config name
- Select Modem Port connected to a WLL Phone at 'Connect to'
- Port Speed : 115200 bps
- Flow Control : CTS&RTS(DTR)
- Dial Type : Tone
- Input commands below at Modem init string settings
- Use: AT+CRM=1;\$LGPKT=3
- Click OK button



How to input commands In Extra settings

1) **AT+CRM**

- ➔ case 0 : for async or fax service
- ➔ case 1 : for packet service

2) **AT \$LGPKT**

- ➔ Case 0 : service option 25 for MDR
- ➔ Case 1 : Service option 25 for MDR or service option 15 for Packet

dependent on system

- ➔ Case 2 :
 - AT\$LQNC = 0 : Service option 15 for Packet



- AT\$LGQNC = 1 : Service option 12 for QNC
- Case 3 : Service option 33 for High Speed Packet Data(HSPD)